

metabo®

METABO CATALOGUE 2024

LATEST AC & DC POWER TOOLS



125mm 1100W ALL PURPOSE ANGLE GRINDER WQ1100-125

- Robust and ergonomic angle grinder
- Powerful motor with good overload capacity
- Tool-free M-Quick-System
- Quick tool-free adjustable guard
- S-automatic mechanical safety clutch minimises kick-back
- Restart protection



125mm 1750W RAT TAIL ANGLE GRINDER WE17-125QUICKRT

- Perfect ergonomics thanks to slim handle
- Restart protection
- Marathon-motor for added dust protection and long service life
- Tacho Constamatic (TC)
Full-wave Electronics: fast work progress by means of constant speed under load



125mm 1900W ANGLE GRINDER with M-Brush Technology WEV19-125QMBRUSH

- Powerful 1,900W and M-brush technology equipped for industrial use
- Metabo M-brush technology: service-free carbon brushes with long service life
- Vario Tacho Constamatic (VTC)
Full-wave Electronics with Thumbwheel



125mm 1700W QUICK INOX ANGLE GRINDER WEV17-125QUICKINOX

- Metabo Marathon motor for added dust protection, and long service life
- Soft-start and restart protection
- Perfect processing of stainless steel: robust, powerful angle grinder with high gear reduction and adjustable reduced speed for cool finish
- Vario Tacho Constamatic (VTC)
Full-wave Electronics with Thumbwheel



180mm 2400W ANGLE GRINDER WE24-180MVT

- Metabo Marathon-motor for added dust protection and long service life
- Rotating back handle and side handle can be mounted at 3 positions
- Tool-free adjustable guard; twist-proof
- Electronic overload protection and restart protection



230mm 2400W HEAVY DUTY ANGLE GRINDER WE24-230MVTQUICK

- Electronic safety shutdown reduces kickback
- Back handle and side handle can be mounted at 3 positions
- Tool-free disc change
- Electronic overload protection and restart protection





AC ANGLE GRINDERS

125mm 1100W ANGLE GRINDER

W11-125QUICK

- Marathon-Motor delivers longer life and more power
- S-Automatic mechanical safety clutch
- Auto-stop carbon brushes to protect the motor
- Tool free, fast disc change at the touch of a button with the Metabo M-Quick-System
- Tool-free adjustable guard; twist-proof
- Gear housing can be unscrewed and rotated 90°



125mm 1400W HEAVY DUTY ANGLE GRINDER

WEQ1400-125

- Robust and ergonomic angle grinder for any application
- Powerful motor with good overload capacity
- M-Quick-System tool free fast disc change
- Constant speed under load
- Metabo S-automatic mechanical safety clutch minimises kick-back
- Electronic overload protection
- Electronic soft start and restart protection



125mm 1350W HEAVY DUTY ANGLE GRINDER

W13-125QUICK

- Marathon motor for added dust protection and long service life
- M-Quick-System brings tool free, fast disc change
- Quick tool-free adjustable guard
- Low-vibration side handle (MVT)
- S-automatic mechanical safety clutch: minimises kick-back
- Restart protection



125mm 1350W ANGLE GRINDER WITH PADDLE SWITCH

WP13-125QUICK

- Tool-free, fast disc change at the touch of a button with the Metabo M-Quick-System
- Low-vibration side handle Metabo VibraTech (MVT)
- Paddle switch with dead man function: safe to operate due to an ergonomically integrated non-slip switch



125mm 1900W ANGLE GRINDER WITH M-BRUSH TECHNOLOGY

WEPBA19-125QDSM-BRUSH

- Powerful 1,900W and M-brush technology equipped for industrial use
- Metabo M-brush technology support for industrial use and service-free carbon brushes
- Paddle switch with dead man function: safe to operate due to an ergonomically integrated non-slip switch
- Quick tool-free adjustable guard



125mm 1350W HEAVY DUTY ANGLE GRINDER

WEPBA17-125QUICKDS

- Marathon motor for added dust protection and long service life
- M-Quick System brings tool-free, fast disc change
- Quick tool-free adjustable guard
- Low vibration side handle (MVT)
- S-automatic mechanical safety clutch: minimises kickback
- Restart protection



125mm 1550W FLAT-HEAD ANGLE GRINDER

WEF15-125QUICK

- Powerful flat-head angle grinder for working quickly in acute angles down to 43°
- Particularly developed for the removal of weld slag, rust or paint in narrow frame constructions and for working in tight spaces
- Longer service life, more power: the Metabo Marathon-motor with patented dust protection, up to 20% more overload capacity and 50% more torque
- Tacho Constamatic (TC) Full-wave Electronics: fast work progress by constant speed under load



125mm 1900W CONCRETE RENOVATION ANGLE GRINDER

RSEV19-125

- For effective spot grinding and removal of concrete, screed and coatings with diamond cup wheels
- 1,900 Watt strong Metabo Marathon-motor with low weight
- High torque and overload capacity
- Low weight, ideal for sanding walls and ceilings
- Perfect ergonomics thanks to slim handle for maximum control



METABO ANGLE GRINDERS – SAFETY & PERFORMANCE ADVANTAGES



METABO S-AUTOMATIC SAFETY CLUTCH MINIMAL KICKBACK & MAXIMUM CONTROL

The mechanical safety clutch reduces the kickback of a disc that got stuck in the material to the lowest level in the market. For large angle grinders, this task is taken over by the electronic safety shutdown.

- Increased safety, predictable handling
- Reduces the chance of kick-back during jams
- Greatly reduces the likelihood of shattered cutting wheels and gear damage



METABO BRAKE TECHNOLOGY SAFETY AFTER LOSS OF CONTROL

In an emergency the disc stops within a matter of seconds. In case of loss of control, the integrated deadman switch immediately switches off the machine, if the user releases the switch. The mechanical disc brake, brakes the disc after switching off within a matter of seconds – also when the power is interrupted.

- Stops thin cutting wheels in under 1 second
- Stops grinding wheels in under 2 seconds
- Greatly reduces the likelihood of injury from kickback or loss of control



METABO VIBRATECH & AUTO-BALANCE SYSTEM SAFETY WHEN LOSING CONTROL

Anti-vibration system – less vibrations – longer application times. The Auto-balancer from Metabo compensates unbalances for cutting and grinding discs. The Metabo VibraTech (MVT) decouples the handle areas and reduces the vibrations.

Your benefits:

- Low-fatigue working
- Longer application times
- 100% greater wheel and tool life
- 50% less vibration reduces likelihood of work related disorders
- Considerably reduces the risk of “White Finger Syndrome”



METABO SOFT START & RESTART PROTECTION GENTLE AND SAFE RESTART

With the controlled and gentle soft start, the machine ramps up smoothly to its maximum speed. The user is protected even after a sudden power interruption, for example in the event of a power cut: The restart protection prevents that the still active machine starts up after the power has been restored. The angle grinder must first be switched off and then switched on again.



AC SANDERS, BURNISHER & PAINT STRIPPERS

125mm 240W RANDOM ORBITAL SANDER FSX200INTEC

- Light and handy machine for convenient one-hand operation
- Grip area with non-slip soft-grip surface
- Dust-proof ball bearings for long service life of the machine
- 11,000 RPM
- 22,000 OPM



150mm 350W RANDOM ORBITAL SANDER SXE450TURBOTEC

- Patented adjustable "Duo" oscillating circuit setting
- Variospeed (V) Electronics for working at customised speeds
- Turbo boost: allows additional power reserves to be employed
- Dust-proof ball bearings
- 4200 – 11,000 RPM



710W 80mm PAINT STRIPPER LF724S

- Environmentally-friendly removal of paint and varnish
- Die-cast aluminium gear housing
- Carbide reversible blade, can be used on four sides for a long service life
- Suitable for processing untreated wood
- Suitable for processing notches by virtue of lateral blades
- Variably adjustable milling depth
- Includes MetaBox 145



1700W INOX BURNISHING MACHINE KIT SE17-200RTSET

- Powerful burnishing machine for sanding, satin-finishing, brushing and high-gloss polishing
- Vario-Tacho-Constamatic (VTC)-Full Wave Electronics with Thumbwheel
- Electronic soft start for smooth start-up
- 800 – 3000 RPM



147mm 200W MULTI SANDER FMS200INTEC

- Triangular base plate for sanding edges, corners and surfaces.
- Grip area with non-slip, soft-grip surface
- 100mm x 147mm base
- 13,000 RPM
- 26,000 OPM



150mm 350W RANDOM ORBITAL SANDER SXE150-5.0BL

- Extremely light and flat random orbital sander with symmetrical design for easy change of hands or operation with two hands
- Orbit diameter 5 mm for maximum material removal with good surface quality
- Non-slip paddle switch with dead man function for safe starting and optionally also control of the speed
- Vario Tacho Constamatic (VTC) Full-wave Electronics for grinding with materials requiring customised speeds, which remain constant under load
- Electronic presetting of the desired speed range



900W 60mm TUBE BELT SANDER RBE9-60SET

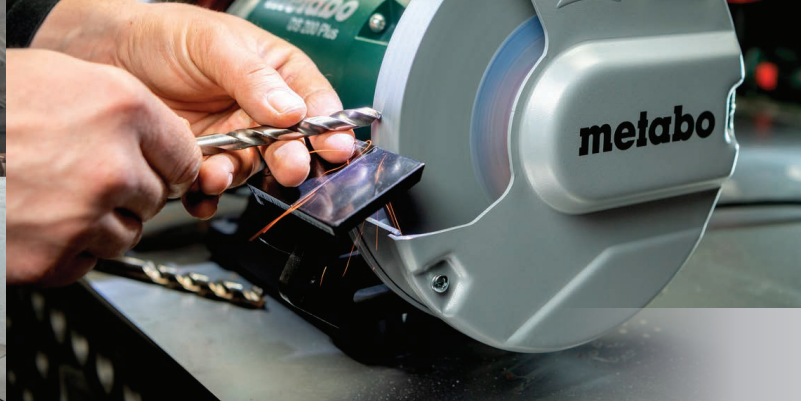
- Compact tube belt sander with high belt speeds for productive processing of stainless steel pipes
- Large wrap angle of 190° for smooth surfaces
- Metabo Marathon motor with patented dust protection for long service life
- Thumbwheel controlled Vario-Constamatic (VC)-Full wave electronics



25mm 1700W METAL WELD BEAD REMOVER PFM17

- Fast, clean removal of weld beads in one work step with the newly developed metal weld bead remover
- Small metal chips are generated during face milling (no metal dust that is a health hazard)
- One-touch controller
- Simple, comfortable change of the indexable inserts at the milling head
- Slim handle area and large bow-type tool-free adjustable handle for safe, uniform guidance





AC BENCHTOP TOOLS

2300W 355mm METAL CUT-OFF SAW CS22-355

- Powerful metal cut-off saw for cutting of profiles, pipes and rods made of steel, NF metals, iron and cast profiles
- Quick clamping device with variable mitre setting for angled cuts from -15° to 45°
- Large handle transversal to the cutting axis for optimum power transmission while cutting
- Adjustable cutting depth limiter for optimum use of the cutting disc
- Easy, fast disc change with spindle lock
- Maximum user safety: swivelling cutting guard, adjustable spark deflector sheet and rubberised base for safe cutting



1500W 254mm TABLE SAW TS254M

- Compact mobile table saw with impressive cutting performance
- Anti-twist tubular frame construction
- Powerful 1500W motor
- Electronic overload protection
- Motor brake for quick stop of the saw blade in 3 seconds
- Restart protection
- Soft start for long service life of motor and drive
- Precisely adjustable rip fence with double clamping and quick fastening
- Automatic resetting to 0 – 45 ° after undercuts
- 520mm cutting width rip fence
- 195mm material width mitre fence



TABLE SAW STAND TSU

- For ideal working height and stability
- Can be folded up compactly
- Ready mounted



2000W 254mm TABLE SAW WITH LEGS TS254

- Compact and light table saw design
- Integrated stand
- Powerful motor with overload protection
- 3 sec. brake
- Restart protection
- Soft-start feature
- Precise rip fence
- Precise saw blade inclination
- 970x995mm max. support surface



600W 200mm BENCH GRINDER DS200PLUS

- Powerful machine for sophisticated sharpening, grinding and deburring tasks
- Suitable for use of steel wheel brushes for removing rust
- Integrated LED light for optimal illumination of the working area
- Large, tilting work piece support with practical V-groove for sharpening welding needles
- Low-noise and low-vibration, maintenance-free induction motor
- Maximum smooth running and long tool life of the discs thanks to high-quality mounting flanges





WET & DRY VACUUMS

1400W ALL-PURPOSE VACUUM CLEANER

ASR35HACP

BRUSHLESS

- Suited for extracting concrete and rock dust
- Ideal vacuum cleaner for removal of mould and old insulation in roof and wall areas
- Ideal when sanding painted or coated wood surfaces with lead, nickel, cadmium or chromium content
- Compact vacuum cleaner for liquids and dry solids with commercial registration



1400W ALL-PURPOSE VACUUM CLEANER

ASR35MACP

BRUSHLESS

- Optimal dust protection for clean, comfortable working
- Automatic shut-down when vacuuming liquids once the maximum fill level is reached
- Optimum suction power by pre-selection of the hose diameter
- Antistatic basic equipment prevents static charge when using appropriate accessories



1400W ALL-PURPOSE VACUUM CLEANER

ASR35LACP

BRUSHLESS

- AutoClean: saves costs and time by means of automatic filter cleaning in continuous use
- Automatic shut-down when vacuum liquids once the maximum fill level is reached
- If the optimum suction performance falls below a certain level, the filters are vibrated immediately
- Automatic trailing mechanism for emptying the suction hose completely



36V WET / DRY VACUUM CLEANER

ASR3618BL25MSC

BRUSHLESS

- Powerful cordless wet/dry vacuum cleaner with cordless control function for intelligent extraction without cable connection
- 3-stage suction power controller for adapted power depending on the application and maximum battery pack runtimes of more than 80 minutes
- High user safety: certified in accordance with EU standard for dust class M



UNIVERSAL START/STOP CORDLESS CONTROLLER KIT

Works with all AC Vacuum models and Power Tool brands



UNIVERSAL DUST EXTRACTION START/STOP CORDLESS CONTROLLER KIT

630235000

Includes wireless remote, receiver power, socket and 3x heavy duty straps

Works with all brands of power tools and AC vacuums

Wireless controller for automatically starting any brand of AC vacuum cleaner/dust extractor.

Metabo's new Universal Cordless Controller kit automatically switches on and off your vacuum cleaner or dust extractor when using it with a power tool. Just attach the Universal Cordless Controller remote to the end of your vacuum hose, or to your tool, and it will detect the tool's vibrations and power on the vacuum. Switch off the tool and the vacuum will stop.



3 year Cordless Tool Warranty



3 year Battery Pack Warranty Unlimited charge cycles!



Ultra-M Technology Perfect interaction between tool, battery pack and charger.



100% Compatibility with all Metabo 18 Volt cordless machines, yesterday, today and in the future.



BATTERIES AND ACCESSORIES

18V 5.5Ah LiHD BATTERY & CHARGER KIT

5.5LIHD1+1KIT

- 1x 5.5Ah LiHD Battery & Fan-cooled Charger
- 21700 high capacity cells
- Designed to handle high current
- More active material
- Longer runtime
- Exterior impact protective rubber coating



LiHD TECHNOLOGY

18V 8.0Ah LiHD BATTERY

8.0LIHD

- 21700 high capacity cells
- Designed to handle high current
- More active material
- Longer runtime
- Exterior impact protective rubber coating



LiHD TECHNOLOGY

18V 10.0Ah LiHD BATTERY

10.0LIHD

- 21700 high capacity cells
- Designed to handle high current
- More active material
- Longer runtime
- Exterior impact protective rubber coating



LiHD TECHNOLOGY

18V 4.0Ah LiHD BATTERY

4.0LIHD

- 21700 high capacity cells
- Designed to handle high current
- More active material
- Longer runtime
- Exterior impact protective rubber coating



LiHD TECHNOLOGY

DUAL QUICK AIR-COOLED CHARGER

ASC145DUO

- The battery packs are charged up to 4x faster than with an entry level charger
- Fast charging for two: the double quick charger for all slide-on battery packs of all Volt classes (12 - 36V)
- Patented "AIR COOLED" charging technology for short charging times thanks to cooling the battery pack during the charging cycle
- Optimal communication between battery pack and charger for maximum service life of the battery packs
- Two USB connections with 1.5 A charging current each

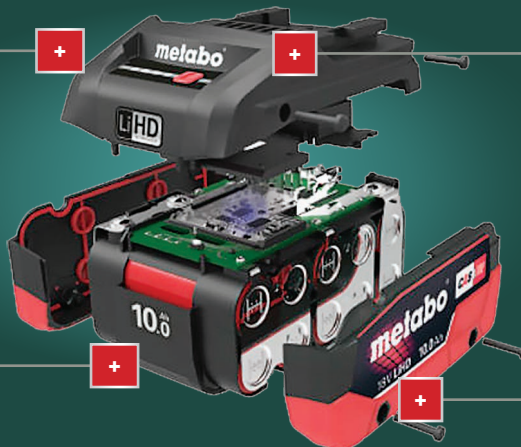


MORE POWER

- New High Density High Power 21700 Lithium Ion Cells
- Designed to handle high currents
- High current capable busbars
- 3x more conductivity using specialised copper alloy cell connector

LONGER RUN TIME

- Higher quality material including silver and copper
- More active material in the new 21700 cells



LONG SERVICE LIFE

- Optimal protection against internal contamination
- Full protective coating on electronic components
- Optimal seal on top of battery pack
- Rubber damping buffers for added cell protection
- Exterior impact protective rubber coating

OPTIMAL SIZE AND WEIGHT

- 5.5Ah, 8.0Ah, 10.0Ah Battery Packs retain same size and weight



18V SINGLE TOOL & COMBO KITS

18V BRUSHLESS 165mm PLUNGE SAW KIT KT18LTX66BL5.5K

BRUSHLESS

- Plunge Cut Circular Saw KT18LTX66BL
- Depth cut of 66mm
- 2x 5.5Ah LiHD Battery Packs
- Air-Cooled Charger ASC55



FS80

- Splinter protection reduces breakout when sawing
- With holes to fix the rail to the workpiece and for hanging storage
- Can be extended in length with the second guide rail and FSV connector (accessory)
- Compatible with many circular saws of other manufacturers



160mm GUIDE RAIL IN BAG FS160INBAG

- Splinter protection reduces breakout when sawing
- With holes to fix the rail to the workpiece and for hanging storage
- Can be extended in length with the second guide rail and FSV connector (accessory)
- Compatible with many circular saws of other manufacturers

18V 450/500g GREASE GUN KIT FP18LTX5.51K

- 9 pre-set grease volumes plus continuous mode
- 3-way trigger
- Barrel capacity: 450/500g
- Hose length: 1200mm
- Air-Cooled Charger ASC55
- 1x 5.5 h LiHD Battery Pack



18V BRUSHLESS 3/4" 1750Nm IMPACT WRENCH KIT SSW18LTX1750BL5.5SBK

BRUSHLESS

- High Torque Impact Wrench SSW18LTX1750BL
- 1750Nm tightening torque
- Air-Cooled Charger ASC55
- 2x 5.5Ah LiHD Battery Packs
- Small Tool Bag



18V BRUSHLESS AIR COMPRESSOR KIT P160-518LTXBLOF1HD10K

BRUSHLESS

- 8bar/116PSI Air Compressor 160-518LTXBLOF
- 1x 10.0Ah LiHD Battery Pack
- Air-Cooled Charger ASC55



Ultra-M Technology
Perfect interaction
between tool, battery
pack and charger.



100% Compatibility
with all Metabo 18 Volt
cordless machines,
yesterday, today and
in the future.



18V STAINLESS STEEL & BEVELLING BARE TOOLS

18V 125mm STAINLESS STEEL ANGLE GRINDER W18LTX125QUICKINOX

- Speed and torque configured precisely for stainless steel processing ensuring a cool grinding action with perfect finish
- Metabo Quick for tool-free disc change
- Adjustable guard
- Battery pack can be rotated 90°
- Overload protection
- Restart protection
- Electronic soft-start



18V BURNISHING MACHINE S18LTX115

- Compact burnishing machine for grinding, burnishing, brushing and high-gloss polishing
- Spindle lock and tool-free flange nut
- Fast and tool-free adjustment of guard
- Battery pack can be rotated 90°
- Overload protection
- Restart protection
- Electronic soft start
- 100-200mm diameter



18V 60mm TUBE BELT SANDER RB18LTX60

- Compact cordless tube belt sander
- Large wrap angle of 190°
- Robust motor for long service life
- Tool-free change of sanding belt
- Battery pack can be rotated 90°
- Overload protection
- Restart protection
- Electronic soft-start
- 30mm x 533mm grinding belt



18V 150mm FILLET WELD GRINDER KNS18LTX150

- Very flat cordless fillet weld grinder for processing stainless steel weld seams
- Heavy Duty motor
- Tool-free change of sanding belt
- Low-maintenance belt drive for long service life
- Battery pack can be rotated 90°
- Overload protection
- Electronic soft start
- Restart protection



18V 457mm BAND FILE BF18LTX90

- Powerful, compact cordless band file for grinding, burnishing and deburring difficult to reach places
- Heavy Duty motor for long service life
- Tool-free change of sanding belt and adjustable belt guide
- Grinding attachment can be swivelled by 270° without tools for perfect adaptation to any working position
- Battery pack can be rotate 90°
- Detachable dust filter to protect the motor
- Overload protection
- Electronic soft start for smooth start-up
- Restart protection



18V CORDLESS BEVELLING TOOL KFM18LTX3RF

- No-load speed 7000 rpm
- 45° chamfers up to 4mm high
- Radius up to 3mm
- Surface free of oxide and burrs
- One-touch controller
- Slim milling head
- Guide stop for uniform finish
- Tool-less handle adjustment
- Battery pack can be rotated 90°
- Overload protection
- Restart protection
- Electronic soft-start





18V METALWORKING BARE TOOLS

18V BRUSHLESS 76mm COMPACT ANGLE GRINDER CC18LTXBL

CC18LTXBL

BRUSHLESS

- Versatile tool for many applications
- Large selection of discs to process metal, wood, stone, tiles and plastic
- Powerful brushless motor
- Overload protection
- Restart protection



18V 165mm METAL CIRCULAR SAW MKS18LTX58

MKS18LTX58

- For burr & spark-free cold sawing of metal tube, profiles, channel, grids and sheet
- Compatible with guide rails
- Chip collection box
- Die cast aluminium guard & stainless steel base plate
- Viewing window in the guard
- Tool-free adjustable depth control
- 1 second fast brake
- 58mm cutting depth at 90°



18V 13mm 130Nm TAPPING DRILL/SCREWDRIVER GB18LTXBLQI

GB18LTXBLQI

BRUSHLESS

- 2-speed Drill/Driver
- Unique, patented thread-tapping function
- Automatic change of direction of rotation
- Electronic torque control with increased precision
- Selectable "impuls" mode for removal of stubborn screws and for spot-drilling on smooth surfaces
- Includes two quick-change tapping chucks
- Overload protection
- Precision stop



Features M4-M6 & M8-M12 Quick Chucks



18V BRUSHLESS 1.6mm METAL SHEAR SCV18LTXBL1.6

SCV18LTXBL1.6

BRUSHLESS

- For burr-free cutting of sheet metal
- Minimum curve radius 15 mm
- Variable cutting speed
- Comfortable slim grip design
- Adjustable blade spacing
- Economical four-way reversible blade
- Large hand guard
- Electronic overload protection



18V BRUSHLESS 1.6mm NIBBLER NIV18LTXBL1.6

NIV18LTXBL1.6

BRUSHLESS

- For flat and profiled sheet metal up to 1.6mm
- Minimum curve radius of 40mm
- Tool-free adjustment of cutting direction up to 360°, in 45° steps
- High feed rate
- Variable cutting speed
- Distortion and spark-free cutting
- Comfortable slim grip
- Fast tool-free punch and die change
- Electronic overload protection



18V BRUSHLESS 5mm (3/16") BLIND RIVET GUN NP18LTXBL5.0

NP18LTXBL5.0

BRUSHLESS

- Fast riveting compared to compressed air devices
- Supplied with both retaining and non-retaining nose pieces
- Transparent mandrel collection container
- Robust knuckle guard
- Quick change rivet nozzles for different rivet sizes
- Rivet size: 2.4mm - 5.0mm



18V 6mm DIE GRINDER GA18LTX

GA18LTX

- No-load speed 25000 rpm
- Spindle lock for simple burr tool change
- Overload protection
- Precision collect
- Slim design
- Restart protection



18V 125mm FLAT-HEAD ANGLE GRINDER WF18LTX125QUICK

WF18LTX125QUICK

- Flat gear head designed for acute angles down to 43°
- No-load speed 8000 rpm
- Battery pack can be rotated 90°
- Detachable dust filter
- Overload protection
- Robust motor for long service life
- Electronic soft start
- Restart protection
- Heavy Duty motor
- Ultra-M technology
- Overload protection



3 year Cordless Tool Warranty



3 year Battery Pack Warranty Unlimited charge cycles!



Ultra-M Technology Perfect interaction between tool, battery pack and charger.



100% Compatibility with all Metabo 18 Volt cordless machines, yesterday, today and in the future.



18V BARE TOOLS

18V BRUSHLESS 125mm ANGLE GRINDER

WB18LTBL11-125Quick

BRUSHLESS

- Electronic & Mechanical Safety Clutch
- Battery pack lockable in 4 different positions
- M-Quick Nut
- 1 Second Fast Brake
- Soft Start & Restart Protection
- 10,000rpm



18V BRUSHLESS 125mm ANGLE GRINDER

WPB18LTBL11-125Quick

BRUSHLESS

- Electronic & Mechanical Safety Clutch
- Deadman/Paddle Switch
- 1 Second Fast Brake
- M-Quick Nut
- Battery pack lockable in 4 different positions
- Soft Start & Restart Protection
- 10,000rpm



18V BRUSHLESS 125mm ANGLE GRINDER

WVB18LTBL11-125Quick

BRUSHLESS

- Electronic & Mechanical Safety Clutch
- Battery pack lockable in 4 different positions
- M-Quick Nut
- 1 Second Fast Brake
- Soft Start & Restart Protection
- Variable Speed 2,800 - 10,000rpm



18V BRUSHLESS 125mm INOX ANGLE GRINDER

WVB18LTBL11-125QuickInox

BRUSHLESS

- Electronic & Mechanical Safety Clutch
- 1 Second Fast Brake
- M-Quick Nut
- Battery pack lockable in 4 different positions
- Soft Start & Restart Protection
- Made for Stainless Steel - Variable Speed 2,000 - 7,600rpm



18V BRUSHLESS 125mm ANGLE GRINDER

W18LBL9-125

BRUSHLESS

- Service-free brushless motor with highest efficiency and maximum handiness
- Tool-free adjustable guard; twist-proof
- Electronic safety shutdown: reduces kickback if the disc stops unexpectedly - for high user safety



18V BRUSHLESS 1/2" 800Nm IMPACT WRENCH

SSW18LTX800BL

BRUSHLESS

- Low kick-back operation with extremely high torque
- 12 Speed/torque levels



18V BRUSHLESS RIVET NUT GUN

NMP18LTXBLM10

BRUSHLESS

- Quick-change threaded mandrel system
- Auto-reverse function
- For blind rivet nuts up to M10 in aluminium, M8 in steel, M6 in stainless steel
- Easy pre-setting of the setting force
- LED display with protective cover
- 10 pre-set memory positions



18V BRUSHLESS 3/4" 1750Nm IMPACT WRENCH

SSW18LTX1750BL

BRUSHLESS

- Max. fastening torque 1750Nm
- Max. loosening torque 2100Nm
- Max. no-load speed 0 - 1650rpm
- Max. impact rate 2460 bpm
- 12 Speed/torque levels



18V 450/500g GREASE GUN

FP18LTX

- 9 pre-set grease volumes plus continuous mode
- 3-way trigger
- Barrel capacity: 450/500g
- Hose length: 1200mm





18V BARE TOOLS

18V 24mm 3 MODE ROTARY HAMMER DRILL KH18LTXBL24Q

BRUSHLESS

- Quick change chuck
- VibraTech (MVT) technology
- 3 functions: hammer drilling, drilling and chiselling



18V 24mm 3 MODE ROTARY HAMMER DRILL KH18LTXBL24

BRUSHLESS

- Dust-free drilling with dust extraction ESA PLUS
- Electronic soft start for precise spot-drilling



18V 28mm 3 MODE ROTARY HAMMER DRILL KH18LTXBL28Q

BRUSHLESS

- Quick change chuck
- VibraTech (MVT) technology
- 3 functions: hammer drilling, drilling and chiselling



18V BRUSHLESS SABRE SAW SSEP18LTXBLMVT

BRUSHLESS

- Speed selection: 0-3,000 rpm
- 32 mm stroke length
- Switchable pendulum stroke
- Tool-free blade change and depth stop adjustment
- MVT vibration reduction



18V BRUSHLESS 150mm RANDOM ORBITAL SANDER SXA18LTX150BL

BRUSHLESS

- Flat cordless random orbital sander with ergonomic design and low weight for low-fatigue working
- Grip area with non-slip soft-grip surface
- Infinitely variable speed control



18V BRUSHLESS DRYWALL SCREWDRIVER HBS18LTXBL3000

BRUSHLESS

- No load speed: 0 - 3,000rpm
- Max soft torque: 10Nm
- Autostart function
- Switchable impulse function for precise embedding of protruding screws



18V 130Nm HAMMER DRILL SB18LTX-3BLQI

BRUSHLESS

- No load speeds: 0-450 / 0-2000 / 0-4000rpm
- Max soft torque: 66Nm
- Switchable impulse function for removal of stubborn screws



18V BRUSHLESS DRYWALL SCREWDRIVER TBS18LTXBL5000

BRUSHLESS

- No load speed: 0 - 5,000rpm
- Max soft torque: 6Nm
- Autostart function
- Switchable impulse function for precise embedding of protruding screws



18V 130Nm METAL DRILL/SCREWDRIVER BS18LTX-3BLQI

BRUSHLESS

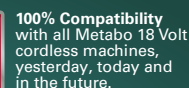
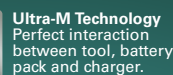
- No load speeds: 0-450 / 0-2000 / 0-4000rpm
- Max soft torque: 66Nm
- Switchable impulse function for removal of stubborn screws



18V BRUSHLESS 165mm PLUNGE SAW KT18LTX66BL

BRUSHLESS

- Precise cuts up to a depth of 66 mm
- Double guide for precise setting of the cutting depth with and without guide rail
- Undercut function for precise transitions, 0° and 45° position re-adjustable for cutting precision
- Sawing close to the wall possible down to 14mm





18V LIGHTING BARE TOOLS

18V 5,000lm LED WORKSITE TOWER LIGHT

BSA18LED5000DUO-S

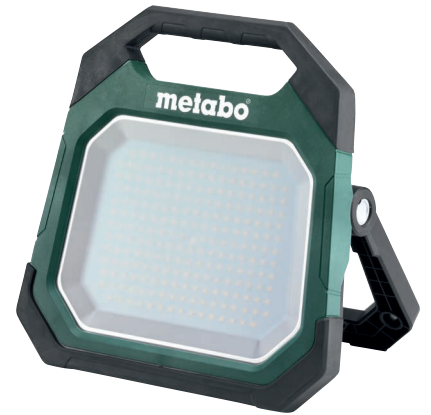
- 5,000 lumens
- Optimal illumination in any desired angle thanks to two rotating and swivelling spotlights
- Height adjustable up to 2 metres
- Set up and fold the site lite in a matter of seconds



18V 10,000lm LED WORKSITE LIGHT

BSA18LED10000

- 10,000 lumens
- Battery or mains operation (detachable power cord)
- Rubberised base
- Stepless dimming function
- Battery life display & flashing battery warning
- Dust and splash-proof (IP54)
- 5/8" thread for tripod mounting
- USB-A charging port (1A)



TRIPOD LIGHTING STAND

623729000

- Telescopic legs with quick locking and additional central telescopic extension
- Stable support thanks to non-slip rubberised feet, tripod feet secured together with chains
- Easy to transport thanks to carry strap and bag
- Working height: 85 cm – 173 cm
- Connecting thread: 5/8"
- Weight: 5 kg



18V 2000lm LED WORKSITE LIGHT

BSA12-18LED2000

- 2,000 lumens
- 360° rotating head
- Rotating hanging hook, integrated magnets & rubberised base
- Stepless dimming function
- Battery life display & flashing battery warning
- Dust and splash-proof (IP54)
- 5/8" thread for tripod mounting



18V 4000lm LED WORKSITE LIGHT

BSA18LED4000

- 4,000 lumens
- 270° rotating head with carry handle
- Stepless dimming function
- Dust and splash-proof (IP54)
- 5/8" thread for tripod mounting
- USB port (1 A)





18V SINGLE TOOL & COMBO KITS

18V BRUSHLESS 1/2" 800Nm IMPACT WRENCH & GREASE GUN KIT

AU68206150

BRUSHLESS

Kit contains

- 18V Brushless 1/2" 800Nm Impact Wrench SSW18LTX800BL
- 18V 450g/500g Grease Gun FP18LTX
- 2x 5.5Ah LiHD Battery Packs
- Air-Cooled Charger ASC55
- Small Carry Bag



18V BRUSHLESS SABRE SAW KIT

SSE18LTXBL1HD5.5K

BRUSHLESS

- 1x 5.5Ah LiHD Battery Pack
- Air-Cooled Charger ASC55



18V BRUSHLESS COMPACT SABRE SAW KIT

SSE18LTXBLCOMP1HD4.0

BRUSHLESS

- 1x 4.0Ah LiHD Battery Pack
- Air-Cooled Charger ASC55



18V 13mm HAMMER DRILL & 1/2" IMPACT WRENCH KIT

MET18BL2MB2HD5.5AG

BRUSHLESS

- 130Nm LXT Hammer Drill SB18LTXBLI
- 300Nm Impact Wrench SSW18LTX300BL
- 2x 5.5Ah LiHD Battery Packs
- Air-Cooled Charger ASC55
- 1x metaBOX Case



18V 13mm HAMMER DRILL & 125mm ANGLE GRINDER KIT

MET18BL2MB2HD5.5AJ

BRUSHLESS

- 130Nm LTX Hammer Drill SB18LTXBLI
- 125mm Angle Grinder WB18LTXBL125Quick
- 2x 5.5Ah LiHD Battery Packs
- Air-Cooled Charger ASC55
- 2x metaBOX Cases



Ultra-M Technology
Perfect interaction
between tool, battery
pack and charger.



100% Compatibility
with all Metabo 18 Volt
cordless machines,
yesterday, today and
in the future.



18V SINGLE TOOL & COMBO KITS

18V 13mm HAMMER DRILL & 1/2" IMPACT WRENCH KIT

MET18BL2MB2HD5.5CG

BRUSHLESS

- 75Nm Hammer Drill SB18LTBL
- 300Nm Impact Wrench SSW18LT300BL
- 2x 5.5Ah LiHD Battery Packs
- Air-Cooled Charger ASC55
- metaBOX case



18V HAMMER DRILL & 400Nm IMPACT WRENCH KIT

MET18BL2MB2HD5.5AH

BRUSHLESS

- 130Nm 13mm Hammer Drill SB18LTXBLI
- 400Nm 1/2" Impact Wrench SSW18LTX400BL
- 2 x 5.5Ah LiHD Battery Packs
- Air-Cooled Charger ASC55
- 1x metaBOX Case



18V 6 PIECE KIT

MET18MX6LB3HD5.5DY

- 130Nm Brushless Hammer Drill SB18LTXBLI
- 3 Mode SDS+ Brushless Rotary Hammer KHA18 LTXBL24QUICK
- 300Nm Brushless Impact Wrench SSW18LTX300BL
- 125 mm Brushless Angle Grinder WB18LTXBL125QUICK
- Brushless Compact Sabre Saw SSE18LTXBLCOMPACT
- Blower AG18
- 3x 5.5Ah LiHD Battery Packs
- Air-Cooled Charger ASC55
- Large Tool Bag



18V 75Nm HAMMER DRILL & IMPACT DRIVER KIT

MET18BL2MB2HD5.5CF

BRUSHLESS

- 75Nm 13mm Hammer Drill SB18LTBL
- 200Nm Impact Driver SSD18LT200BL
- 2x 5.5 Ah LiHD Battery Packs
- Air-Cooled Charger ASC55
- 1x metaBOX case





metabo®



3 Year Cordless Tool Warranty
Additional steps are required for AC tools



3 Year Battery Pack Warranty
Unlimited charge cycles!



18 V



Ultra-M Technology
Perfect interaction between tool, battery pack and charger.



100% Compatibility
with all Metabo 18 volt cordless machines, yesterday, today and in the future.



One battery, many solutions. Cross-brand. 100% Compatibility.



www.cordless-alliance-system.com

TERMS & CONDITIONS APPLY.

All sizes and product information shown are approximate only. E & OE. This Metabo promotion is run by Accent Tools Ltd, NZ Metabo Distributor. Whilst every effort is made to ensure that advertised stock is available at participating stores, due to factors beyond the control of Accent Tools Ltd, not all products advertised in this catalogue will be available in stores. Accent Tools Ltd will do everything possible within reason to maintain stocks of advertised products but cannot be responsible for unforeseen shortfalls beyond their control.

metabo nz
 metabo nz
 metabo nz

www.metabo.co.nz

metabo®